

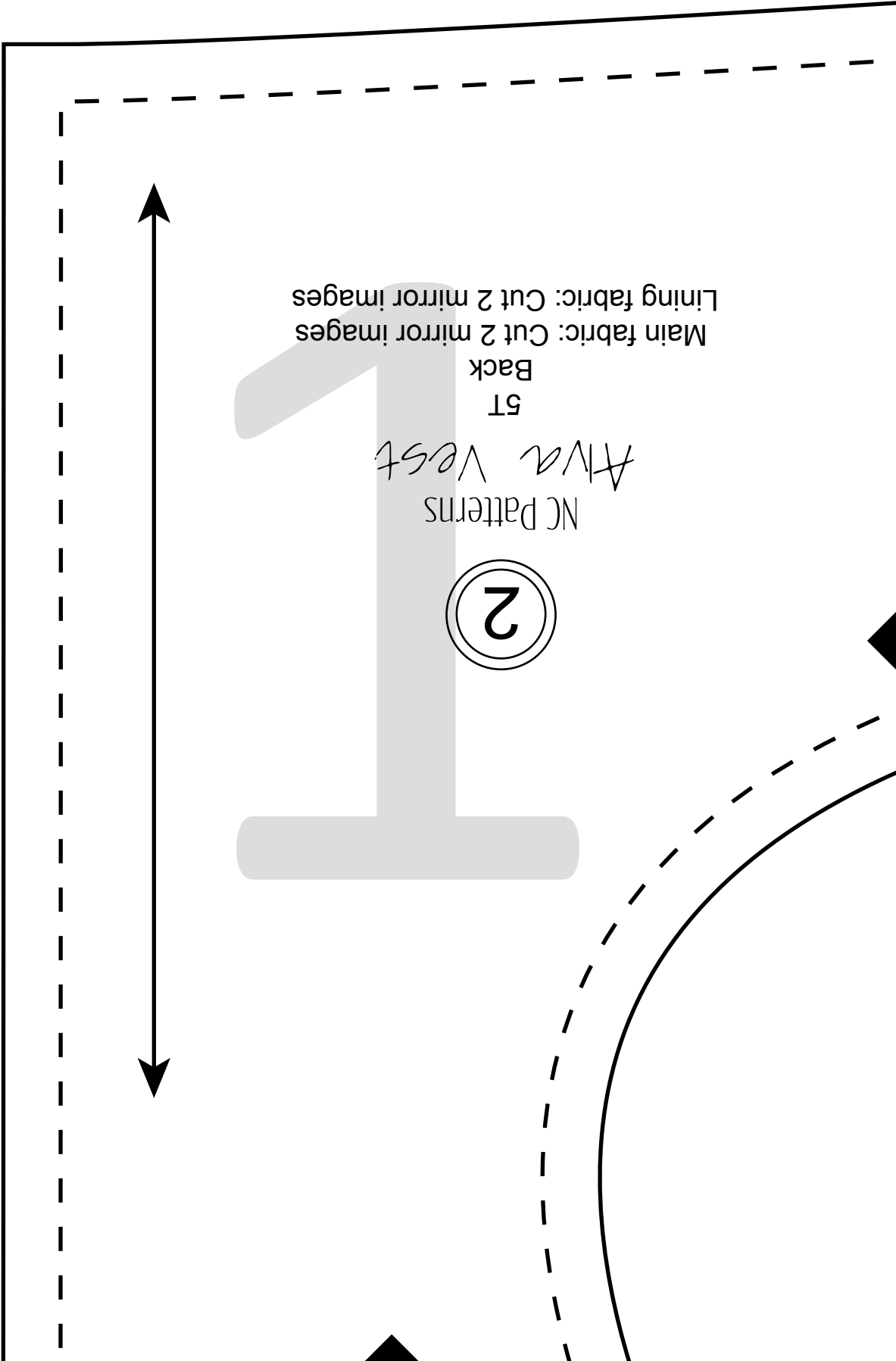
Main fabric: Cut 2 mirror images  
Lining fabric: Cut 2 mirror images

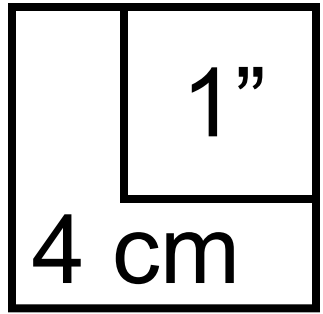
Back

5T

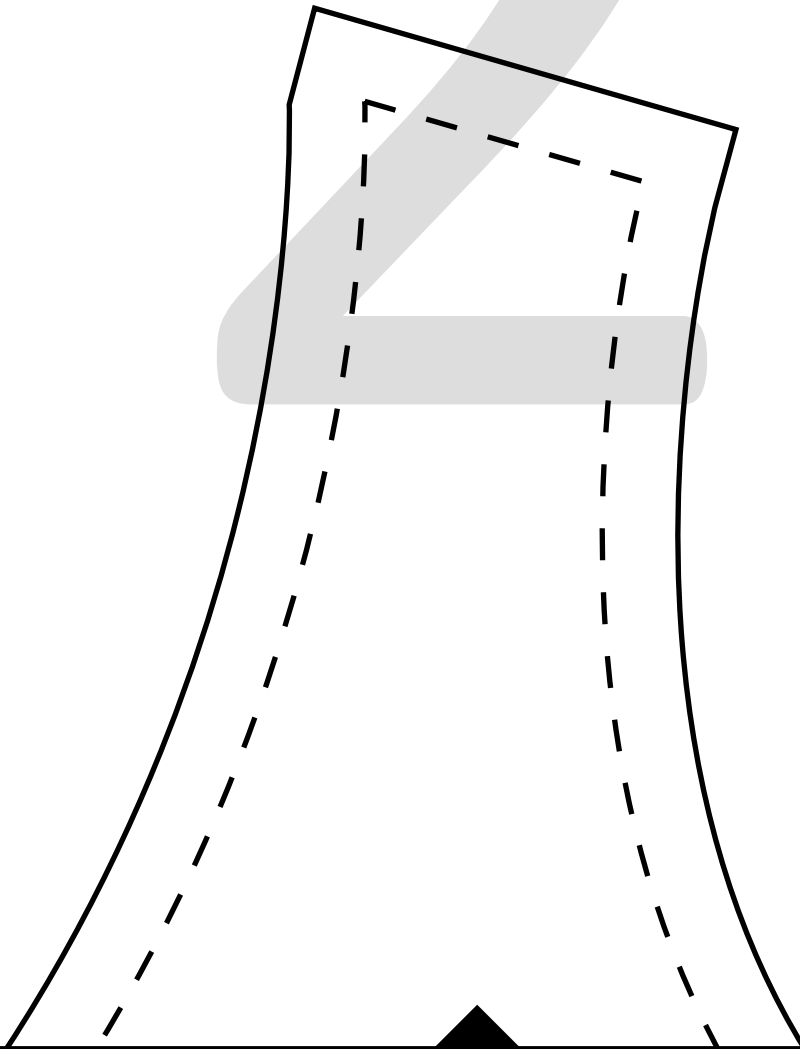
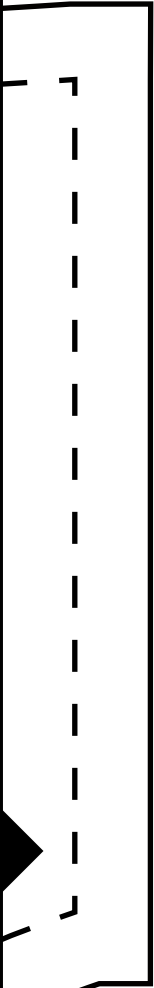
*Alva Vest*

NC Patterns

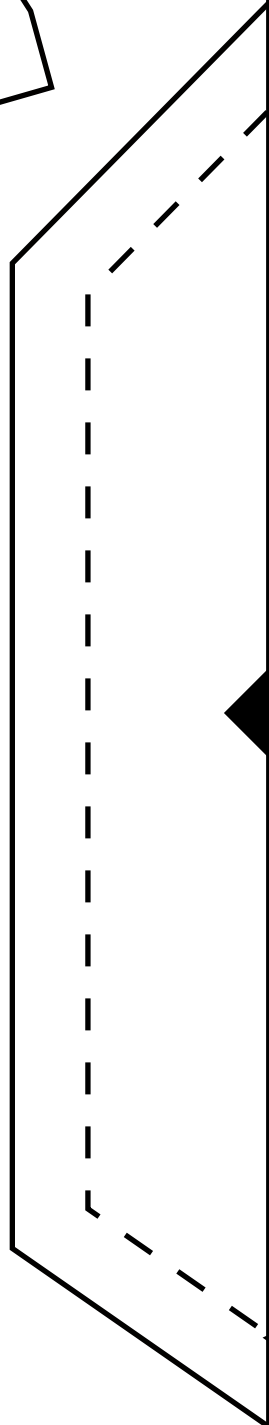
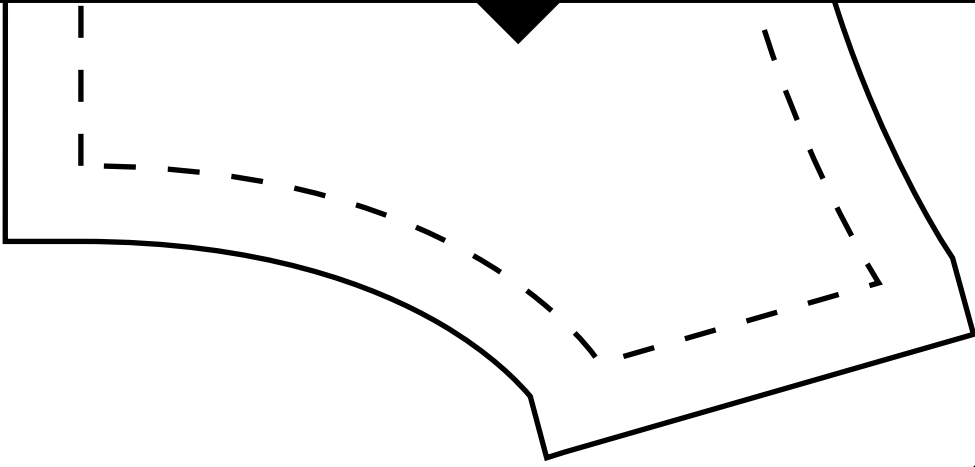




- 3/8 " (1cm) seam allowance and 3/4" (2cm) hem allowance included
- - - no seam or hem allowance included



3



1

NC Patterns

*Ava Vest*

5T

Front

Main fabric: Cut 2 mirror images

Lining fabric: Cut 2 mirror images

Center front

